

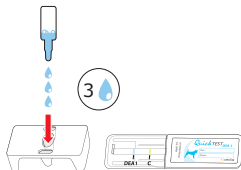
# QuickTest BT DEA 1

Canine procedure for blood typing test

1



2



3



3

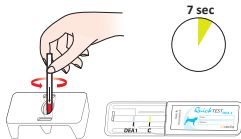


Packed Red Blood cells  
Or whole blood

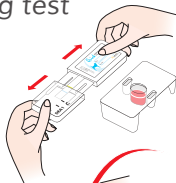
- EDTA
- ACD
- CPD

Do not use Heparin

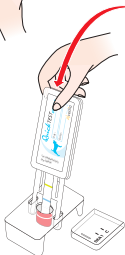
4



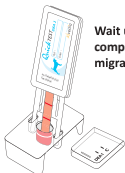
5



6



7



Wait until  
complete  
migration

2 to 4 min

8



Read immediately after testing



C = control



Weak DEA 1 line



Contact us to ask for the  
«Troubleshooting procedure»