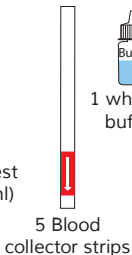
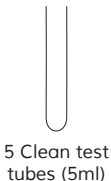
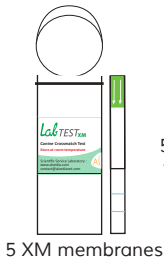


# Lab Test XM

Canine procedure for major crossmatch

Material provided:



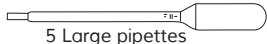
1 white top buffer 1



1 green top buffer 2



1 Wash Buffer



Additional material needed: 1 large centrifuge

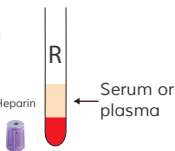
## N°1: PREPARATION OF BLOOD SAMPLES

(MAJOR = Donor RBC + Recipient serum or plasma)

Recipient

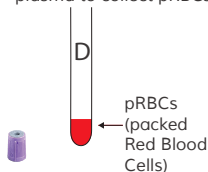
Centrifuge blood tube in order to collect :

- Whole blood
  - EDTA
  - ACD
  - CPD
  - Plain tube
- Do not use Heparin

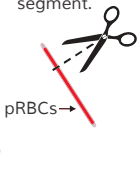


Donor

Centrifuge blood tube. Discard the serum or plasma to collect pRBCs.



Collect blood from blood bag segment.



## N°2: XM TEST PROCEDURE

1



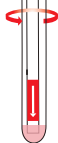
In the clean test tube

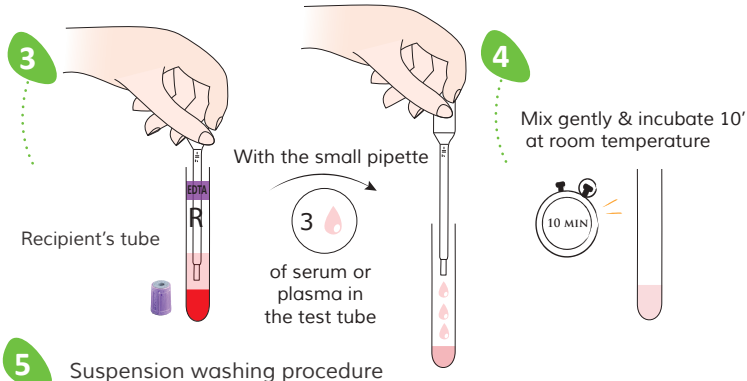
2

Donor's tube  
OR  
Donor's blood bag segment

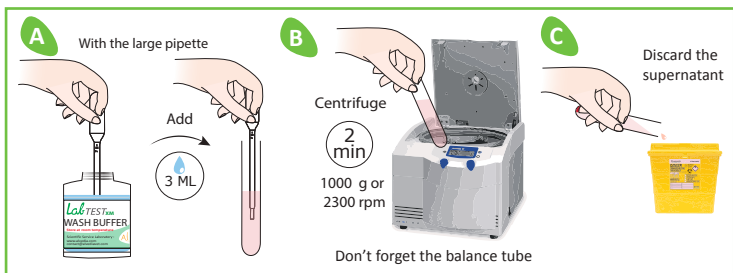


With blood collector strip





**5** Suspension washing procedure



Suspension washing procedure (x3) **STEP 5 MUST BE DONE 3 TIMES**

