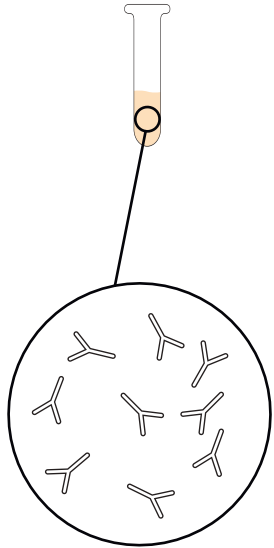


CANINE CROSSMATCH TEST

Example of positive major crossmatch result :

STEP 1

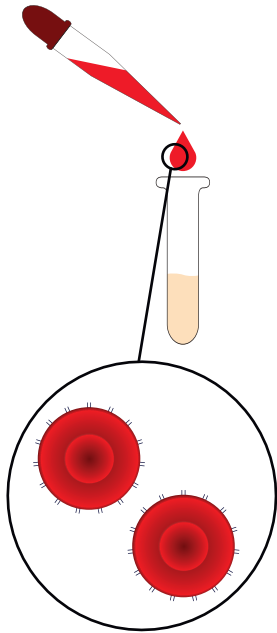
SERUM /PLASMA



Recipient's serum with allo-antibodies.

STEP 2

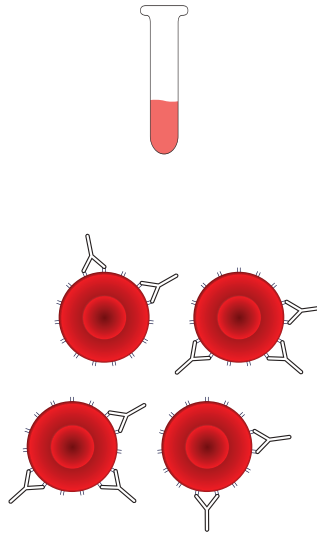
DONOR pRBC



Donor's pRBC are added to the tube with serum.

STEP 3

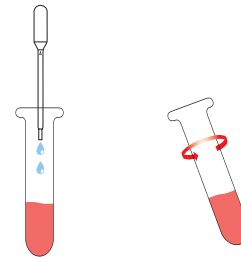
INCUBATION



Allo-antibodies are binding to the RBC.

STEP 4

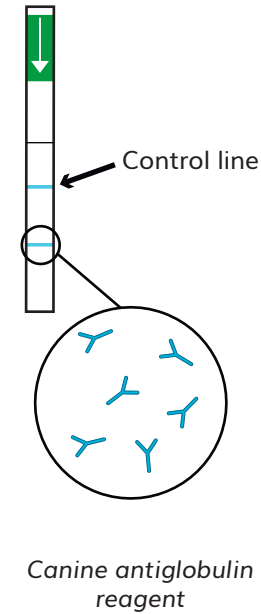
WASHING STEP
PROCEDURE



Mix gently then centrifuge 3 times

STEP 5

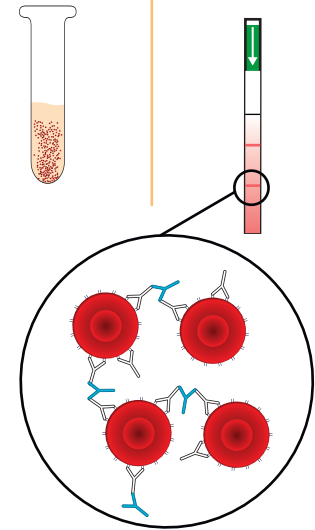
OUR XM STRIP
TECHNOLOGY



The canine XM strip contains a specific canine antiglobulin line.

RESULTS

Standard Method	Alvedia Chrom Method
Hard interpretation	Easy interpretation
	Red line : + = Incompatible
	No line : - = Compatible



The canine antiglobulin on the strip will detect the presence of allo-antibodies binding to the pRBC showing a red line.