



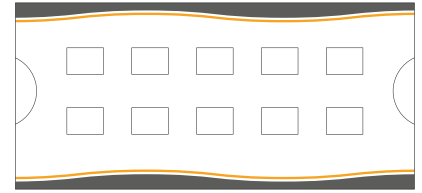
PROCEDURE FOR CANINE MINOR CROSSMATCH

Material provided :

10 gel tests

2 buffer solutions

1 rack for gel tests



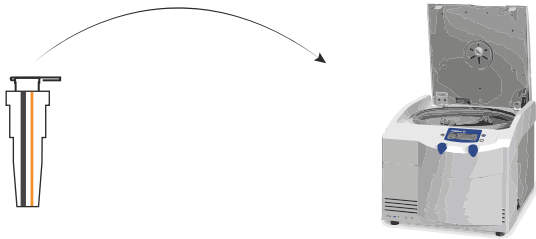
Sample material : RECIPIENT packed RBCs ; DONOR serum or plasma.

Further material required : Centrifuge with swinging bucket ; micropipette ; 2 test tubes.

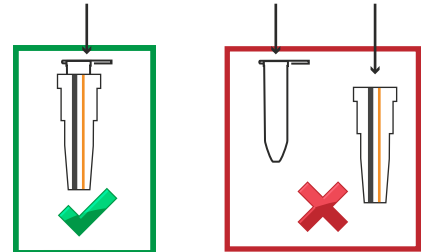
MANDATORY EQUIPMENT : Use only swinging bucket centrifuge.

N°1 : Centrifugation of the gel test before use

Centrifuge the gel test for 2 minutes at 1000g (if you are using «RPM» unit, please contact us), **without dissociating** the gel test tube from the gel test support. DO NOT FORGET TO ADD A BALANCE.



Gel test = Gel test tube + Gel test support

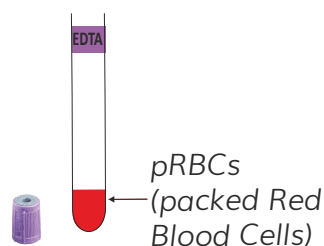


DO NOT DISSOCIATE

N°2 : Preparation of blood samples for Minor XM

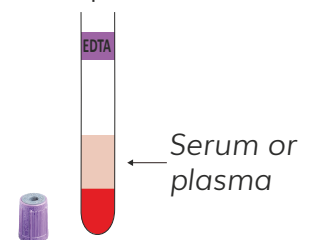
RECIPIENT

Centrifuge blood tube. Discard the serum or plasma to collect pRBCs.



DONOR

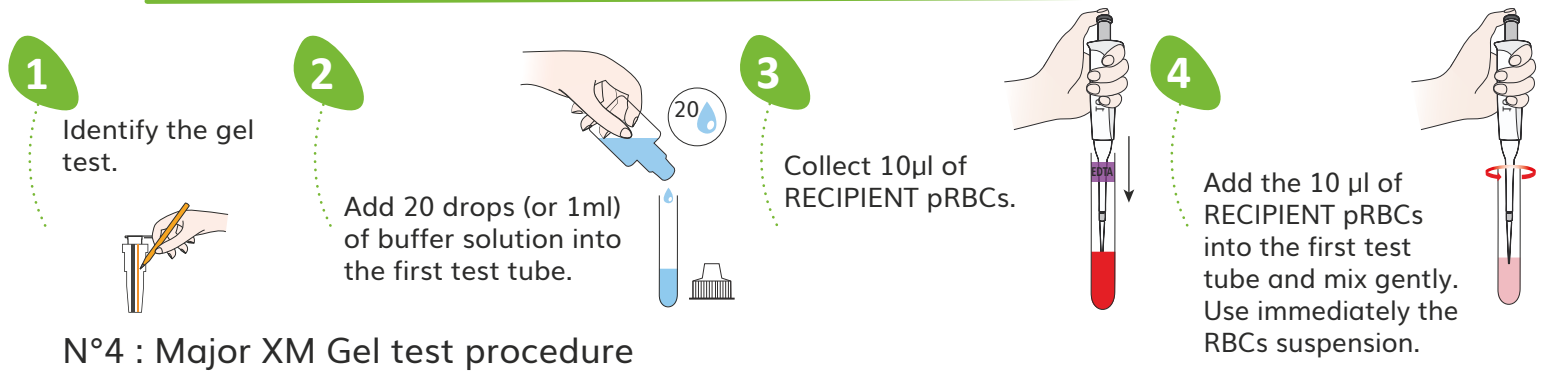
Centrifuge blood tube in order to collect serum or plasma.



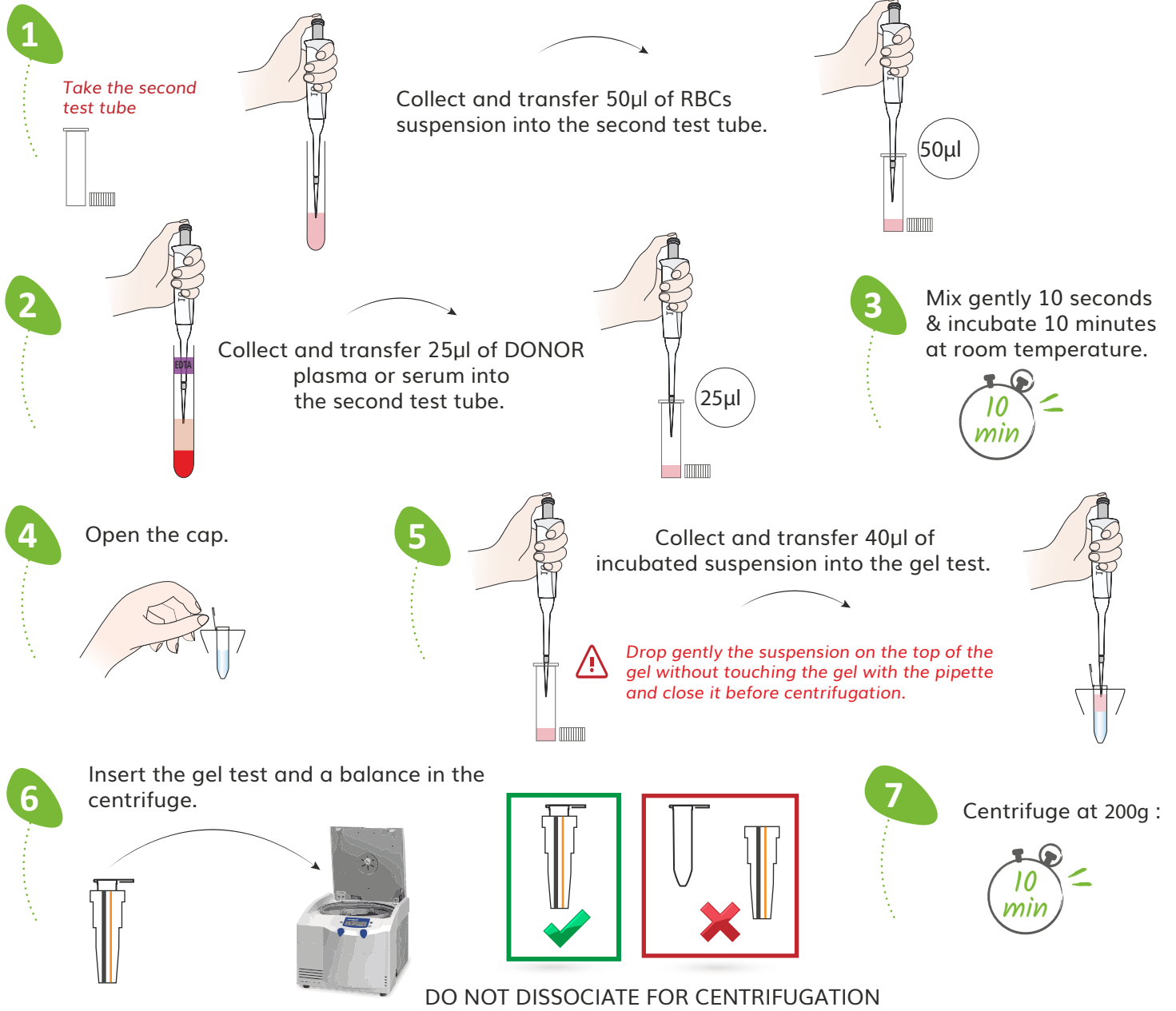
Blood sample specification :

- EDTA / ACD / CPD / Plain tube
- Do not use Heparin

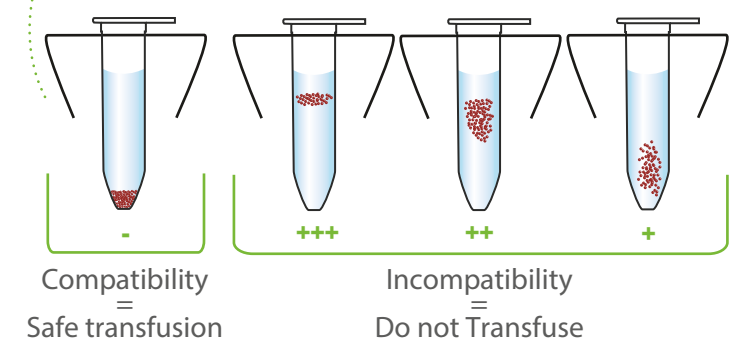
N°3 : RBCs suspension preparation



N°4 : Major XM Gel test procedure



8 RESULT INTERPRETATIONS



Troubleshooting:
Please contact the
Scientific Service Laboratory
contact@alvedia.com
+33(0)478 380 239