



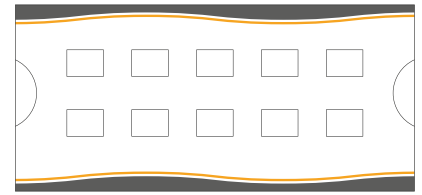
## PROCEDURE FOR FELINE MAJOR CROSSMATCH

Material provided :

10 gel tests

2 buffer solutions

1 rack for gel tests



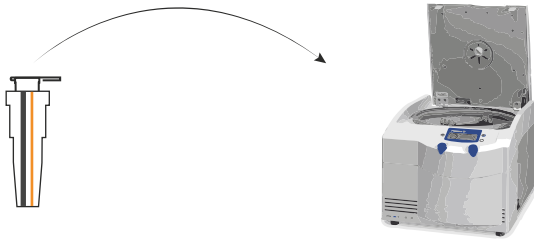
Sample material : DONOR packed RBCs ; RECIPIENT serum or plasma.

Further material required : Centrifuge with swinging bucket ; micropipette ; 2 test tubes.

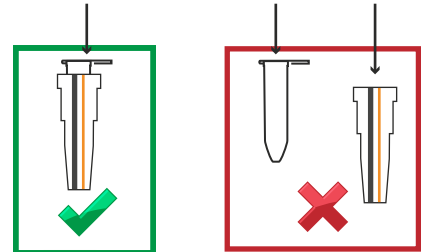
**MANDATORY EQUIPMENT : Use only swinging bucket centrifuge.**

### N°1 : Centrifugation of the gel test before use

Centrifuge the gel test for 2 minutes at 1000g (if you are using «RPM» unit, please contact us), **without dissociating** the gel test tube from the gel test support. DO NOT FORGET TO ADD A BALANCE.



Gel test = Gel test tube + Gel test support



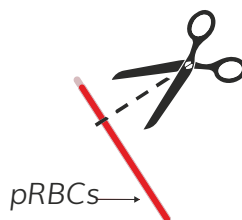
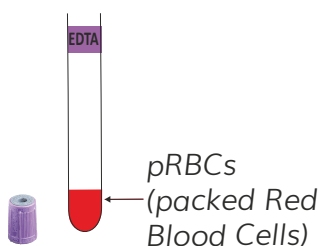
DO NOT DISSOCIATE

### N°2 : Preparation of blood samples for Major XM

Centrifuge blood tube. Discard the serum or plasma to collect pRBCs.

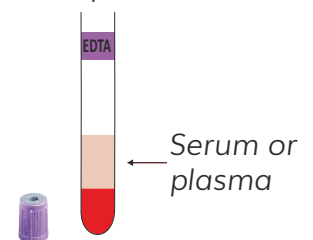
**DONOR**

**OR** Collect blood from blood bag segment.



**RECIPIENT**

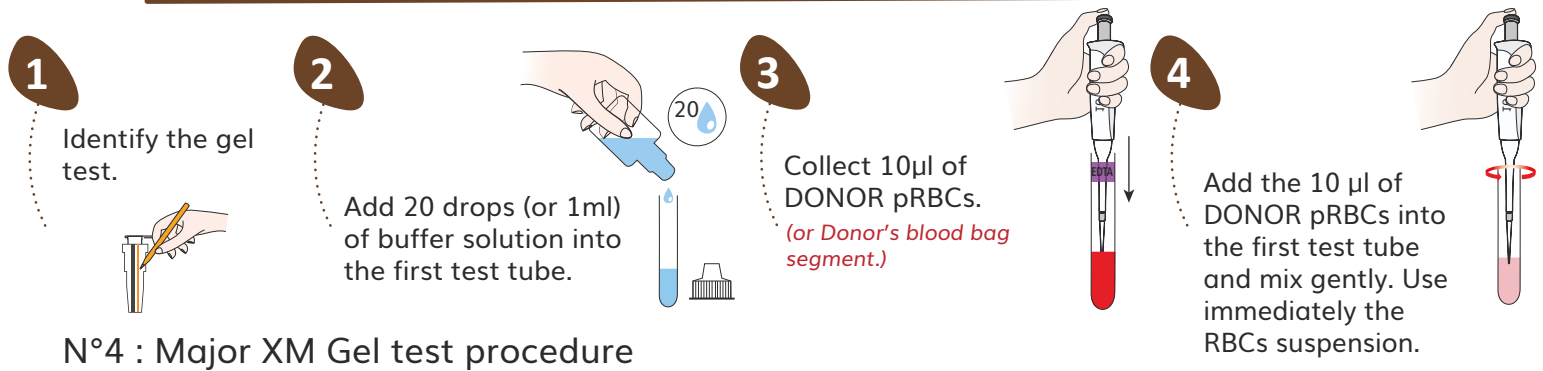
Centrifuge blood tube in order to collect serum or plasma.



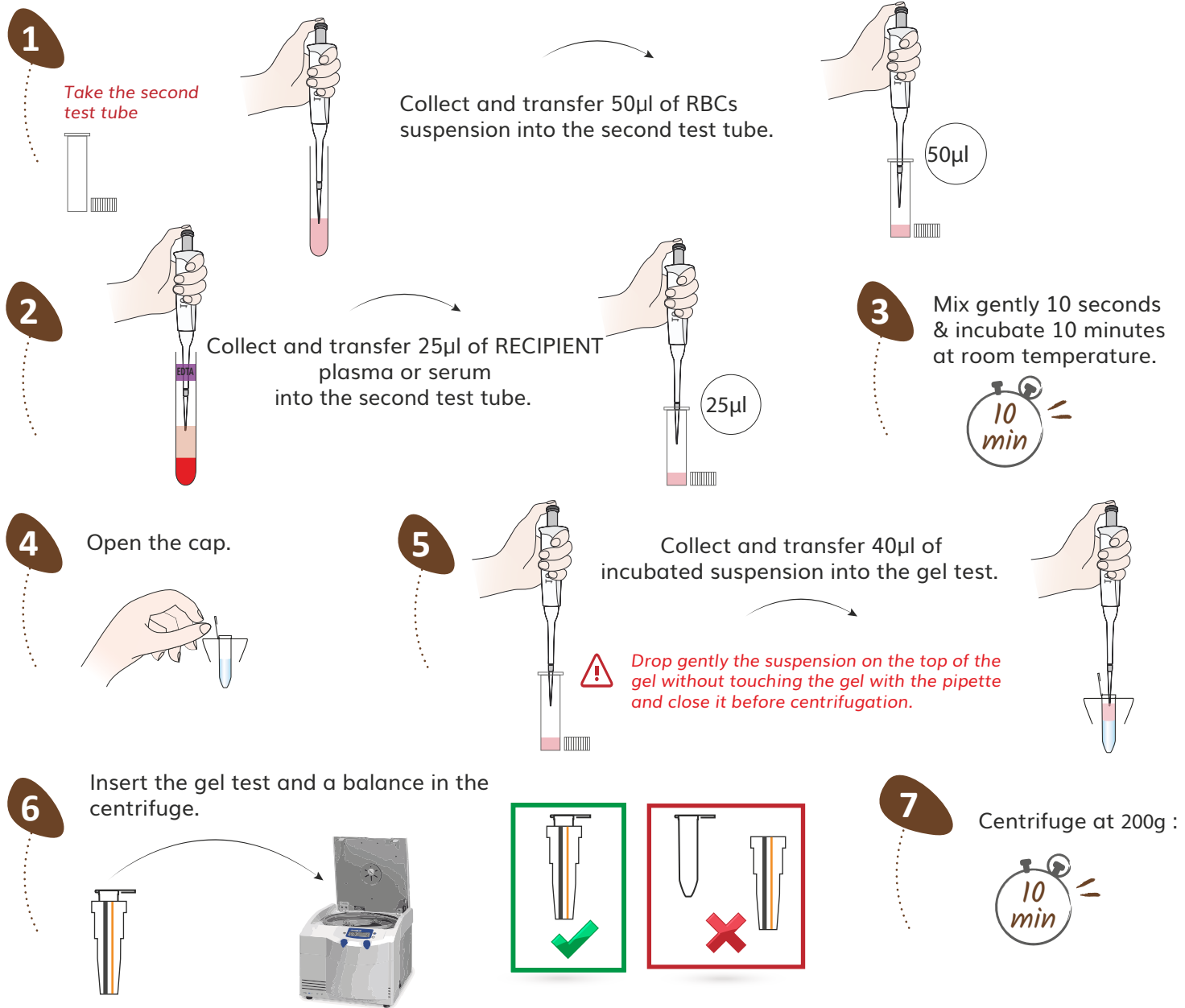
Blood sample specification :

- EDTA / ACD / CPD / Plain tube
- Do not use Heparin

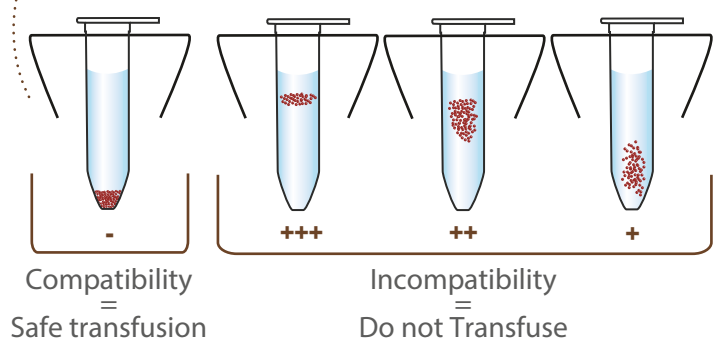
## N°3 : RBCs suspension preparation



## N°4 : Major XM Gel test procedure



## 8 RESULT INTERPRETATIONS



Troubleshooting:  
Please contact the  
Scientific Service Laboratory  
contact@alvedia.com  
+33(0)478 380 239