



PROCEDURE FOR CANINE MAJOR CROSSMATCH

Material provided :

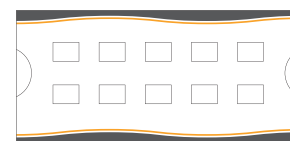
10 gel tests



2 buffer solutions



1 box of gel tests



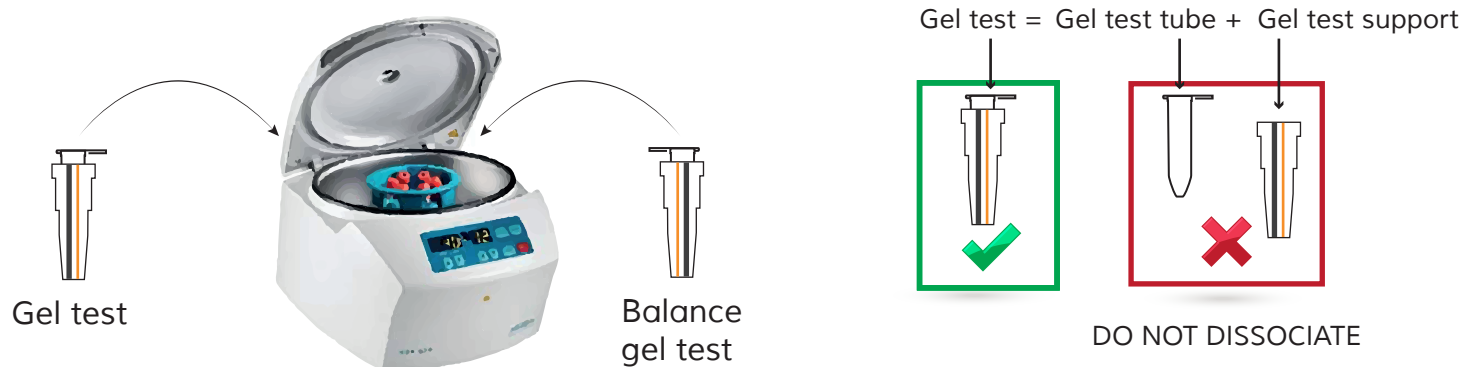
Sample material : Donor packed red blood cells (pRBCs). Preferably drawn into EDTA, CPD or ACD. **Do not use Heparin.** Recipient serum or plasma. For reliable results, use of freshly collected blood is indicated (<3 days at 2 - 8 °C).

Further material required : Centrifuge Hettich EBA270 ; micropipette ; test tubes, tips.

WARNING : Use only swinging bucket centrifuge (IF DIFFERENT THAN HETTICH EBA270).

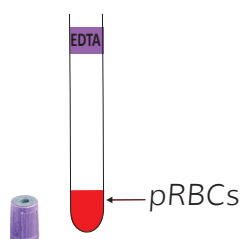
N°1 : Centrifugation of the gel test before use

Centrifuge the gel test for 2 minutes at 3000 RPM with Hettich EBA270. (with other swinging bucket centrifuge : 2 minutes at 1000 g.)

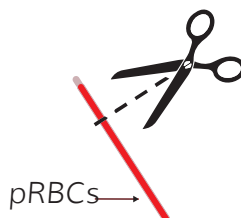


N°2 : Preparation of blood samples for Major XM

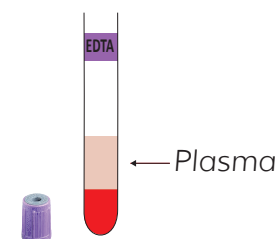
DONOR
Centrifuge blood tube. Discard the plasma to collect pRBCs.



OR Collect blood from blood bag segment.



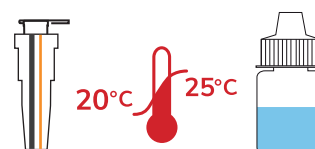
RECIPIENT
Centrifuge blood tube in order to collect plasma.



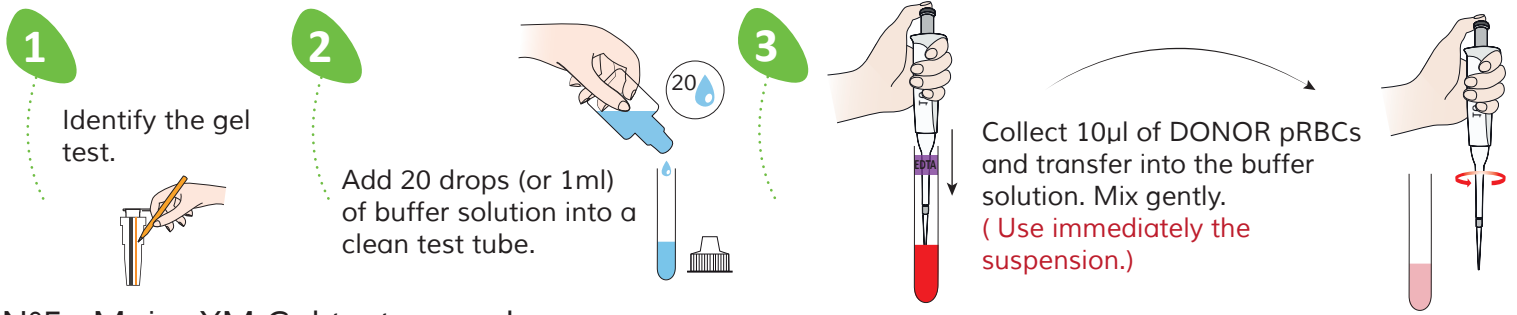
Warning : If the blood tube is hemolyzed, wash 3 times in PBS or saline buffer (NaCl 0,9%) to obtain washed pRBCs. Washing RBCs procedure movie on : www.alvedia.com/customer-scientific-support/

N°3 : Preparation of material provided before use

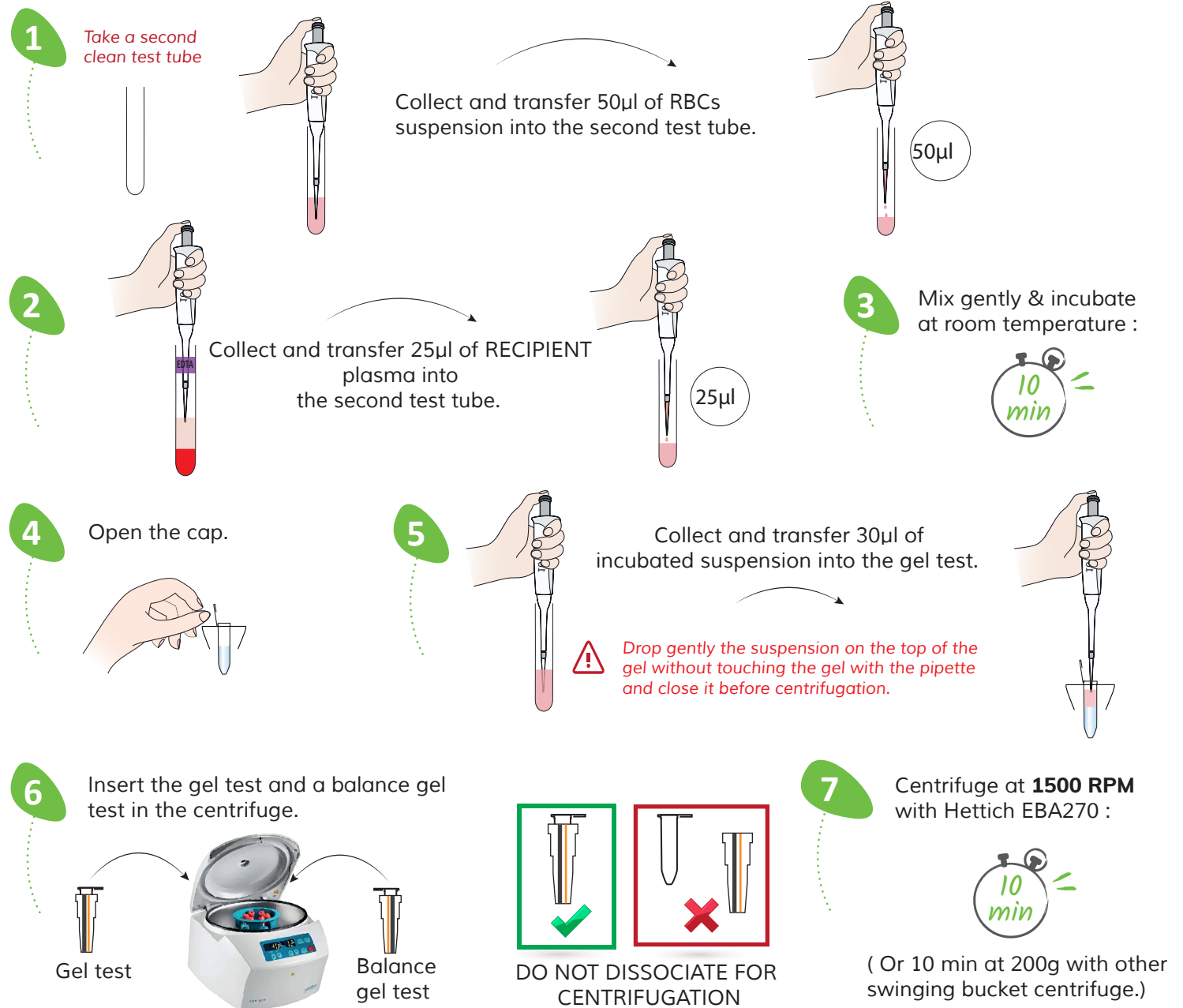
Allow the buffer solution and gel test to reach room temperature before use.



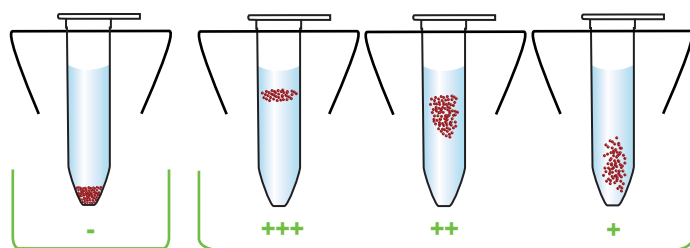
N°4 : RBCs suspension preparation



N°5 : Major XM Gel test procedure



RESULT INTERPRETATIONS



Troubleshooting:
Please contact the
Scientific Service Laboratory
contact@alvedia.com
+33(0)478 380 239

Alvedia
Alice Veterinary Diagnostic