

Gel Test

Major/Minor XM Feline

QR CODE : Movie Procedure



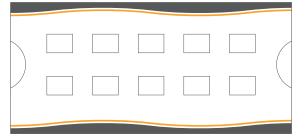
PROCEDURE FOR FELINE MAJOR/MINOR CROSSMATCH

Material provided :

10 Gel Tests

1 buffer solution

1 box of Gel Tests



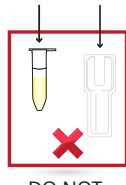
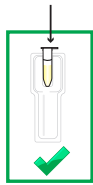
Sample material : Patient's packed red blood cells (pRBCs).
 Preferably drawn into EDTA, CPD or ACD. **Do not use Heparin.**
 For reliable results, use of freshly collected blood is indicated (< 3 days at 2 - 8 °C).
 If blood sample > 3 days OR hemolyzed : wash 1 time the blood.

Further material required : Centrifuge Hettich EBA270 ; micropipette ; test tubes ; tips.

WARNING : Use only the swinging bucket centrifuge Hettich EBA270.

N°1 : Preparation of material provided before use

Gel Test = Gel tube + Gel support



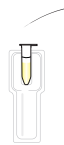
DO NOT
DISSOCIATE



Allow the buffer solution and Gel Test to reach room temperature before use.

N°2 : Centrifugation of the Gel Test before use

Centrifuge the Gel Test for **2 minutes at 3000 RPM** with Hettich EBA270, in order to remove air bubbles or gel drops in the upper part of the Gel Test.



Gel Test



Balance Gel Test
(use another Gel Test
in the box as balance)



N°3 : Preparation of blood samples for MAJOR XM*

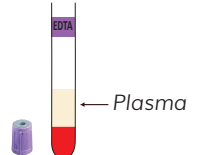
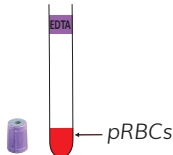
Centrifuge blood tube for **5 minutes at 3000 RPM**, with Hettich EBA270. Discard the plasma to collect pRBCs.

DONOR

Collect blood from blood bag segment.

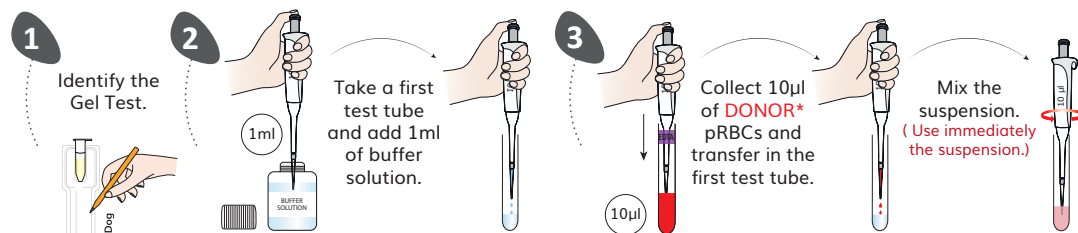
RECIPIENT

Centrifuge blood tube for **5 minutes at 3000 RPM**, with Hettich EBA270, in order to collect plasma.



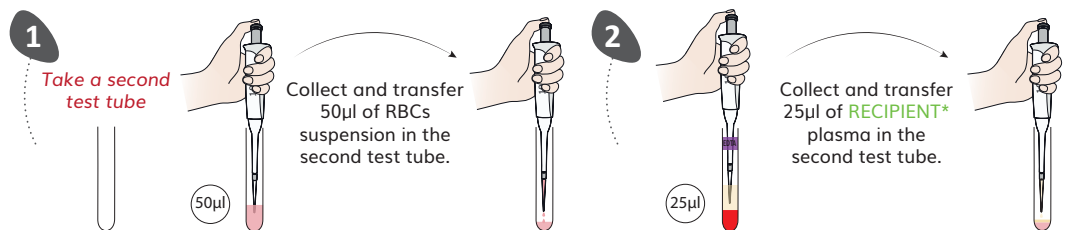
*MINOR XM : Reverse the blood samples by collecting **RECIPIENT** pRBCs and **DONOR** Plasma

N°4 : RBCs suspension preparation

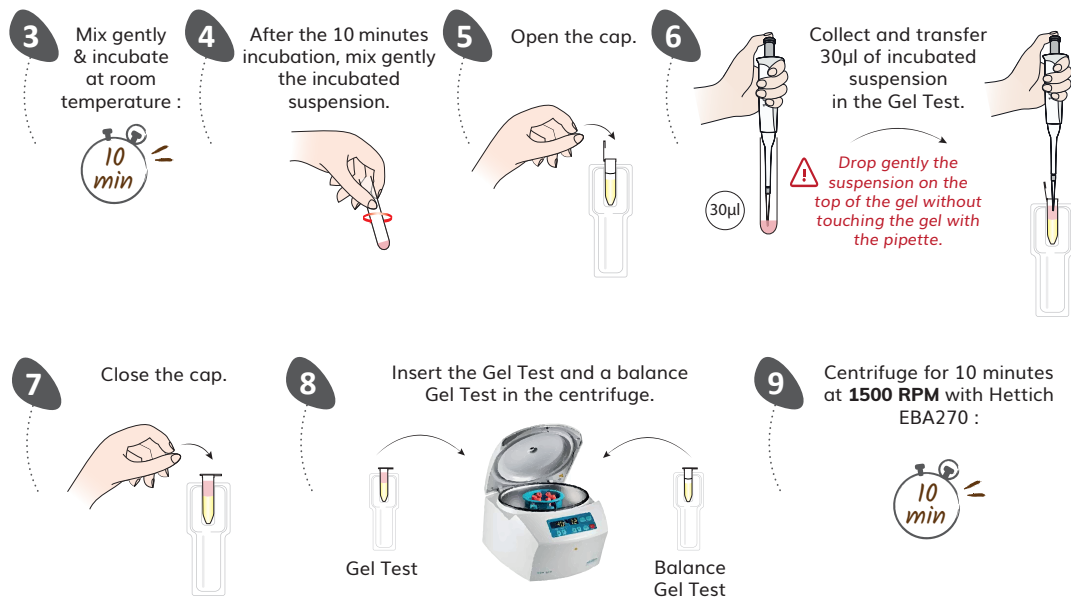


*For MINOR XM collect 10µl of **RECIPIENT** pRBCs

N°5 : Major XM Gel Test procedure

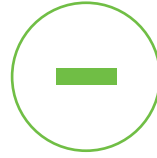
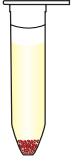


*For MINOR XM collect 25µl of **DONOR** plasma

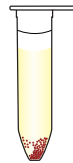
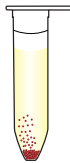
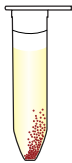
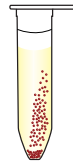
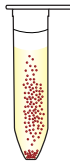
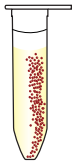
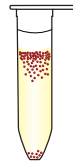
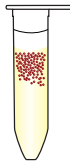
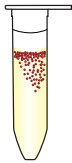


RESULT INTERPRETATION

Compatibility = SAFE TRANSFUSION (–)



Incompatibility = DO NOT TRANSFUSE (+)



Troubleshooting
Please contact the Scientific Service Laboratory
contact@alvedia.com
+33(0)478 380 239

Alvedia
Alice Veterinary Diagnostic

Procedure Alvedia - maj 06/10/2022 - Small Stories ©

LIMITATIONS

- If the blood tube is hemolyzed OR more than 72 hours : wash 1 time in PBS or saline buffer (Nacl 0,9%) to obtain washed pRBCs.
- Do not use Gel Test tubes which show signs of drying.
- Gel Test tubes which show air bubbles or gel drops in the upper part of the tube must be centrifuged before use.
- Strict adherence to the procedures and recommended equipment, especially the Hettich EBA270, is essential for a reliable and validated result.
- A non-specific (fixed angle centrifuge) will give you false positive results.
- Debris, fibrin residues or other artefacts may cause a few unagglutinated cells to trap on top of gel, but these should be interpreted as negative.
- Use of suspension solutions others than the provided one may modify the reactions.
- Too diluted or concentrated red blood cell suspensions can cause aberrant results.

VALID GEL TEST



DAMAGED GEL TESTS

Please contact us for scientific support.

