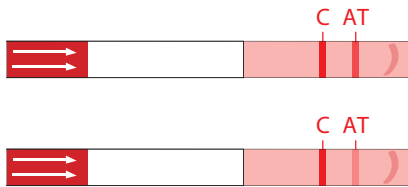


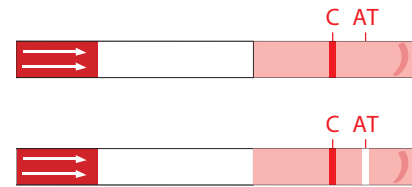


Lab.Test DAT

INTERPRETATION OF RESULTS



Weak line= positive result



White line= negative result

AT = Antiglobulin Test for detection of Canine Direct Antiglobulin Test

C = Control Line

! In case of any other result, please take a picture and send us an email at : contact@alvedia.com www.alvedia.com

SCIENTIFIC ADVISES

Be careful, low titer and/or low affinity autoantibodies can be eluted during washing step procedures. This can affect the sensitivity of the DAT test.
An hemolyzed sample or a blood sample drawn more than 12 hours could give you a negative result.

Troubleshooting :
Please contact the
Scientific Service Laboratory
contact@alvedia.com
+33(0)478 380 239

Alvedia
Alice Veterinary Diagnostic

Procedure Alvedia - maj 21/04/2023- Small Stories ©

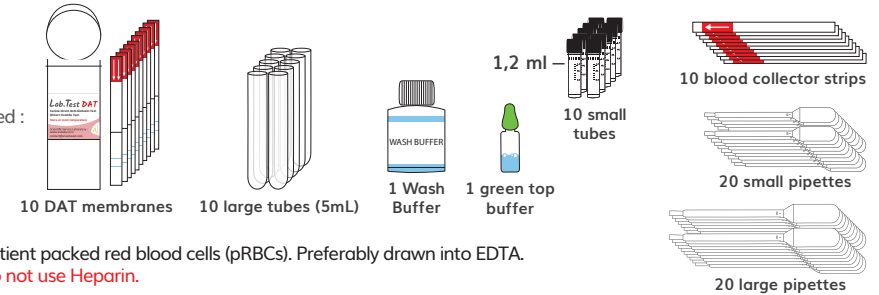


Lab.Test DAT



CANINE PROCEDURE FOR DIRECT ANTIGLOBULIN TEST

Material provided :



Sample material : Patient packed red blood cells (pRBCs). Preferably drawn into EDTA.

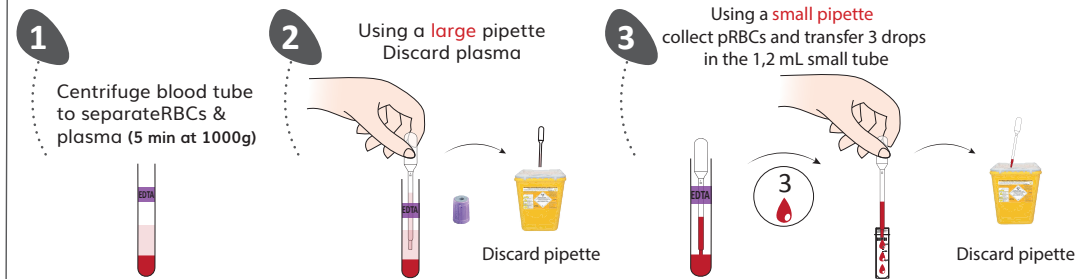
Do not use Heparin.

Further material required : Centrifuge (Benchtop mini-centrifuge or others)

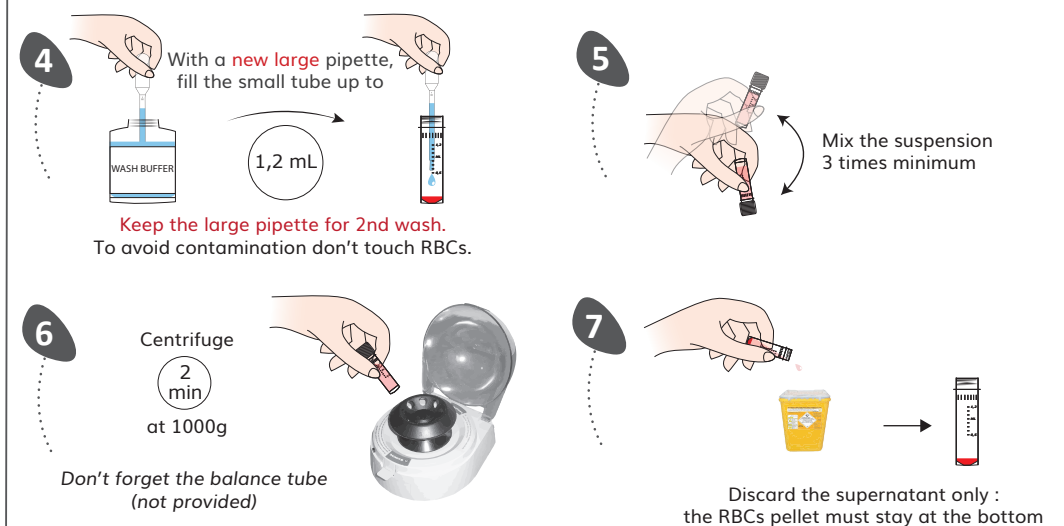
FOR RELIABLE RESULTS : USE FRESH COLLECTED BLOOD ONLY (< 12 HOURS)

N°1 : PACKED RED BLOOD CELLS (pRBCs) WASHING PROCEDURE

PREPARATION



FIRST WASH



SECOND WASH

8 With the **large** pipette, fill the small tube up to 1,2 mL

Keep the large pipette for 3rd wash. To avoid contamination don't touch RBCs.

9 Resuspend completely the pellet by mixing the suspension several times

10 Centrifuge 2 min at 1000g
Don't forget the balance tube

11 Discard the supernatant only : the RBCs pellet must stay at the bottom

THIRD WASH (PROCEDURE TO AVOID DILUTION BEFORE TESTING)

12 With the **large** pipette, fill the small tube up to 1,2 mL

Discard the large pipette

13 Resuspend completely the pellet by mixing the suspension several times

14 Centrifuge 2 min at 1000g
Don't forget the balance tube

15 Using a **new small pipette**, discard the entire supernatant
KEEP RBCS PELLET

B Discard the residual supernatant until reaching few RBCs

C Discard the remaining supernatant with few RBCs
Discard the small pipette

D Washed RBCs pellet ready for DAT test procedure
TO BE USED IMMEDIATELY

N°2 : DAT TEST PROCEDURE

1 Write down the patients ID
dog n°1

2 Add 4 drops of the green top buffer in the 5 mL large tube

3 Collect the RBCs pellet with the blood collector strip
About 10 µL

4 Dip the blood collector strip in the large tube and mix with buffer solution
10s
Discard blood collector strip

5 Insert the DAT membrane

6 WAIT UNTIL COMPLETE MIGRATION
Up to 10 min

7 Read the result at the end of the migration by sticking the membrane on the result form

CANINE RESULT FORM
for Direct Anti-globulin Test (Coombs Test)
Lab.Test DAT

Date: _____
Patient name: _____
Identification code: _____
Test performed by: _____
Lab Test Number: _____

RESULT: DAT + DAT -

TO INTERPRET YOUR RESULT, STICK THE MEMBRANE BELOW

AT = Anti-globulin Test for detection of Canine Direct Anti-globulin Test
C = Control Line

INTERPRETATION OF RESULTS

+ **Weak lines= positive result**

- **White lines= negative result**

In case of any other result, please take a picture and send us on email at : contact@alvedia.com
www.alvedia.com

Alvedia